



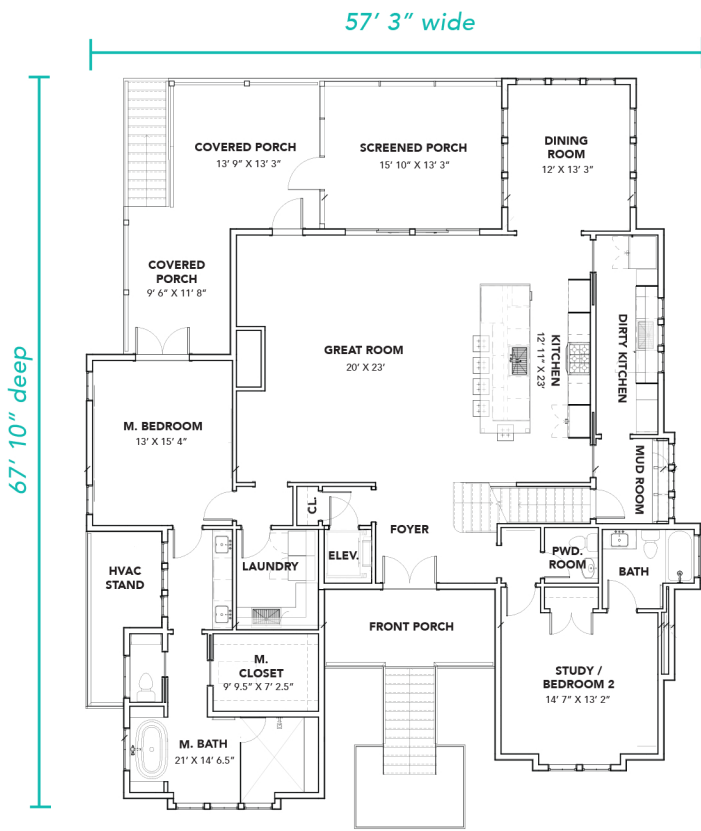
OPTION A

4 or 5 Bedrooms | 4 or 5 Full Baths, 1 Half
 Total Heated - 3,496 SF
 Covered Porches - 905 SF
 Second Floor - 1,014 SF
 Total Under Roof - 7,359 SF

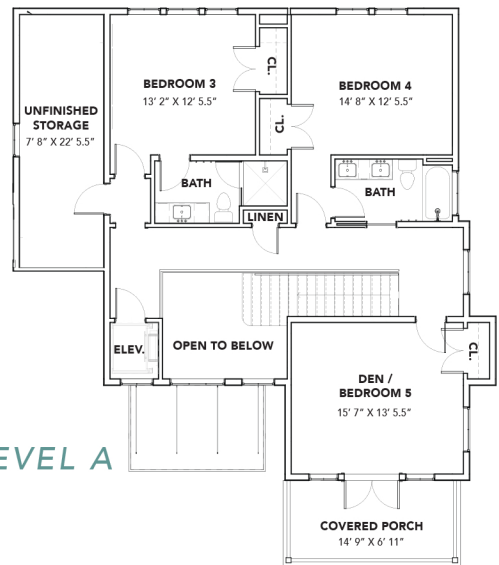
OPTION B

4 or 5 Bedrooms | 4 or 5 Full Baths, 1 Half
 Total Heated - 3,607 SF
 Covered Porches - 905 SF
 Second Floor - 1,125 SF
 Total Under Roof - 7,470 SF

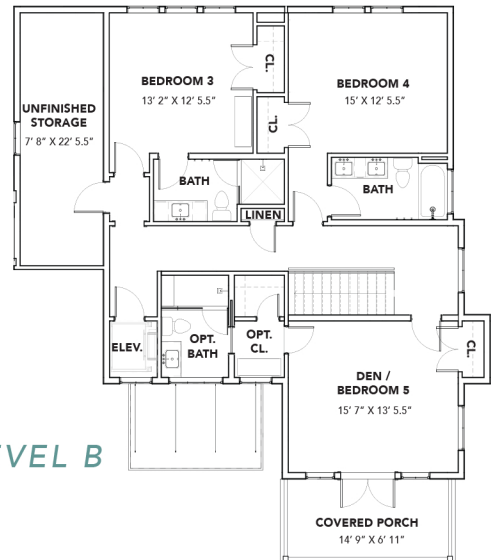
THE SEA ISLAND HOUSE



MAIN LEVEL



UPPER LEVEL A



UPPER LEVEL B